



Accessing the Arise Secure Desktop

THIS SECTION WILL PROVIDE AN OVERVIEW OF THE FOLLOWING;

- DETERMINE THE KEY SEQUENCE USED TO ACCESS YOUR COMPUTER'S BOOT MENU
- HOW TO BOOT INTO THE ARISE SECURE DESKTOP USING THE ASD FLASH DRIVE



Accessing the Arise Secure Desktop

The Arise Secure Desktop is a self contained Operating System that temporarily replaces your current operating system while the Arise Secure Desktop Flash Drive is in use. The steps outlined in this section will provide an overview of how to access the Arise Secure Desktop on your machine and will need to be performed each time you wish to access the Arise Secure Desktop.



Arise Secure Desktop USB Drive

While in Windows

Please do not attempt to access the ASD Flash Drive inside of Windows. The ASD was designed to appear blank. If prompted to format or to scan the disk, please ignore and close the prompt. Do not attempt to modify or copy your ASD as it may render it inoperable due to the anti-tampering system.

Note to Windows 7, 8, 8.1 and Windows 10 Users



If your computer shipped with “Secure Boot Verification” turned on, you will need to disable this prior to accessing the Arise Secure Desktop and enable “Legacy Boot”

Please consult the documentation provided with your computer for instructions on disabling Secure Boot Verification. Please contact your computer manufacturer if you have any questions or require further assistance with this step.





Locating Your “Boot Menu”

In order to access the Arise Secure Desktop, you will need to locate the instructions to boot from USB. This normally involves pressing a button while your computer is powering on. Please consult your computer’s instruction book or manufacturers website to determine the steps required for your specific hardware.

This table includes a few of the most common keys however keep in mind that they may vary based on model.

TIP : Note Your Key

Once you have located the instructions and keystrokes needed to access your Computer’s Boot Menu, Write it down in a predominant place and keep it with your Arise Secure Desktop.

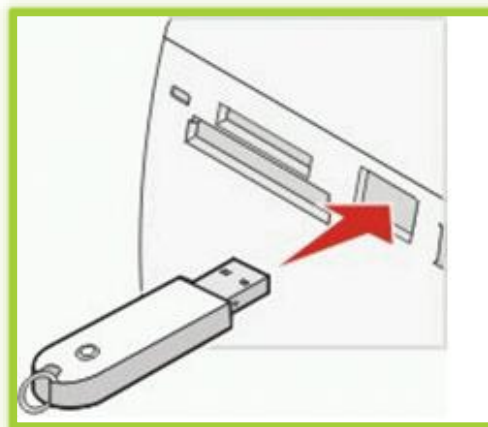
PC Manufacturer	Function key Boot Menu
Acer	F12
Asus	Esc
Compaq	F9
Dell	F12
eMachines	F12
Fujitsu	F12
HP	F9 / Esc
Intel	F10
Lenovo	F12
NEC	F5
Packard Bell	F8
Samsung	Esc
Sony	F11
Toshiba	F12

Booting into the Arise Secure Desktop



Please follow the steps below to boot into your Arise Secure Desktop.

- 1) Save all open work and close all applications on your computer
- 2) Power down your computer
- 3) Insert your Arise Secure Desktop into a USB Port on the Front or Rear of your computer
- 4) Power on your computer while repeatedly pressing the button to access your computer's boot menu obtained from the previous slide.
- 5) Once in your Computer's Boot Menu, select "Generic USB Disk", "SNI Microcontroller" or "USB Flash Drive" using your keyboard and select "Enter". If your computer has a "Legacy" option, please select it.



Booting into the Arise Secure Desktop



If your computer was successful in booting, you will see the following screen. Please do not touch any keys and allow the ASD to perform its boot sequence.

```
Arise Secure Desktop 3.0.0-userprod Build 20 LITE
Default
live - boot the Live System
xforcevesa - boot Live in safe graphics mode
memtest - Run memtest
hd - boot the first hard disk

Press [Tab] to edit options
Automatic boot in 1 second...
```

TIP : Scrolling Text

You will see a lot of scrolling text on the next screen, some of which may contain error messages. These are completely normal and may be ignored.